

FLOS

NEBULA

Mounting	Pendant
Type of ceiling pendant	Suspension steel cable
Lamps description	8 x 70W E27 HSGSA/S + 4 x 70W E27 HSGS
Environment	Indoor
Finish	White
Design awards	Edida 2008
Technical description	Suspension luminaire providing diffused lighting. Central body in die-cast aluminum and 10 blown glass cones of different sizes. Bayonet-type coupling system of the cones for easy cleaning. Die-cast aluminum ceiling attachment with spherical automatic wire clamp. Polycarbonate rose.



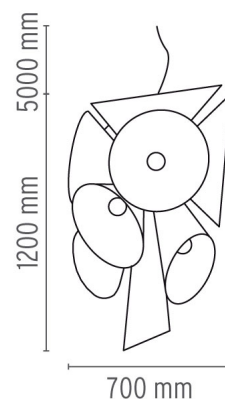
NEBULA

designed by Joris Laarman

Suspension luminaire providing diffused lighting.

● F4550009 White

DIMENSIONS

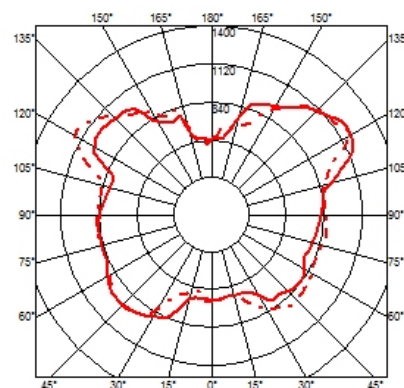
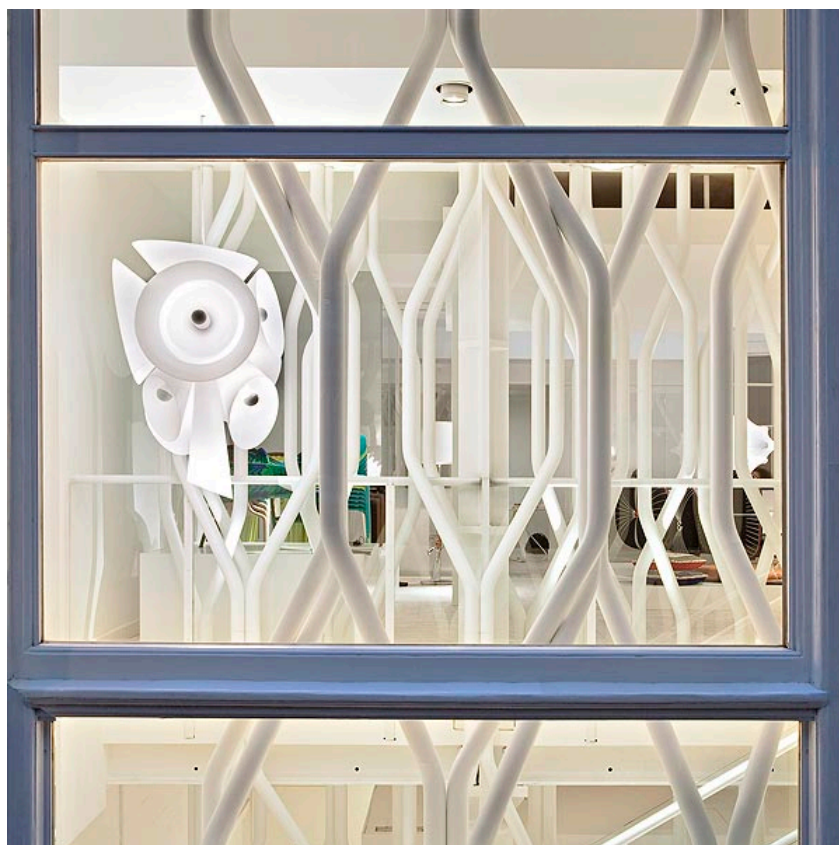


CERTIFICATIONS



PHYSICAL

Supply	Power cord
Cord length(mm)	5000
Construction material	Aluminum, Glass
Weight (kg)	38
Number of heads	10



NEBULA . Lamps



HSGS 70W E27

Lamp Watt:
70 W

Lamp category:
Halogen mains

Socket:
E27

Lamp type:
HSGS



HSGSA/S 70W

Lamp Watt:
70 W

Lamp category:
Incandescent

Socket:
E27

Lamp type:
HSGSA/S



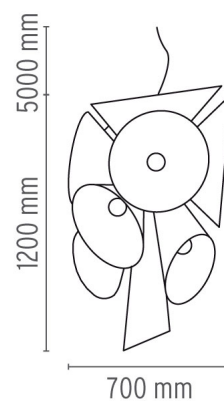
NEBULA

designed by Joris Laarman

Suspension luminaire providing
diffused lighting.

● F4550009 White

DIMENSIONS



CERTIFICATIONS

