

m o o o i[®]



Nut Dining Chair

Sitting in the warm embrace of the Nut Dining Chair by Marcel Wanders you will feel protected and as precious as the most beautiful pearl in the sea. The precious flavour of its design and the rich pattern of its textiles distinguish it from the mass. Its cushions enclose you in the comfortable embrace of Marcel Wander's signature textile 'Oil'.

Designer	Marcel Wanders
Year of design	2013
Material	Oak veneer bent plywood; solid oak legs

m o o o i[®]

upholstery categories

Oil	Jacquard Fresco
Machedil Sottile	Jacquard Old Blue
Machedil Grezzo	Twill
Oray	Aredo Leather
Manga	Cervino Leather
Faux	COF
Bouclé	
Jacquard Canvas	

Oil

composition:

64% VI / 27% CO / 9% PA.



Macchedil, Sottile

composition

49% vi, 24% pl, 21% li, 6% co

abrasion

30.000 martindale

lightfastness 4

firetest

FR BS5852 0/1

EN1021 I&2



Macchedil Sottile
Black indigo



Macchedil Sottile
Pinkish



Macchedil Sottile
Off white



Macchedil Sottile
Light grey



Macchedil Sottile
Light brown



Macchedil Sottile
Grey grey



Macchedil Sottile
Anthracite



Macchedil Sottile
Blue grey



Macchedil Sottile
Cappucino



Macchedil Sottile
Deep blue

Macchedil, Grezzo

composition

47% co, 20% vi, 18% pi, 8% li, 5% pc, 2% af

abrasion

18.000 martindale

lightfastness 4

firetest

FR BS5852 0/1

EN1021 1&2



Macchedil Grezzo
Black indigo



Macchedil Grezzo
Pinkish



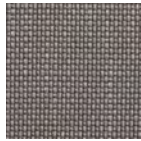
Macchedil Grezzo
Offwhite



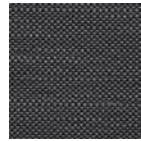
Macchedil Grezzo
Light grey



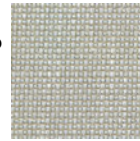
Macchedil Grezzo
Light brown



Macchedil Grezzo
Grey grey



Macchedil Grezzo
Anthracite



Macchedil Grezzo
Blue grey



Macchedil Grezzo
Cappuchino



Macchedil Grezzo
Deepblue

Oray

composition

8% co, 38% vi, 15% pl, 39% li

abrasion

25.000 martindale

lightfastness 4

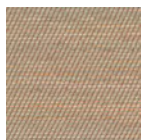
firetest

FR BS5852 0/1

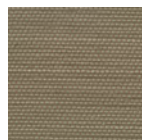
EN1021 I&2



Oray
Cream



Oray
Sand



Oray
Rock



Oray
Mineral



Oray
Gravel



Oray
Dark Gull



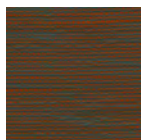
Oray
Copper



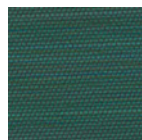
Oray
Rust



Oray
Flamboyant



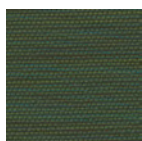
Oray
Oil



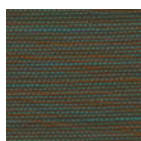
Oray
Aqua



Oray
Peyote



Oray
Ocean



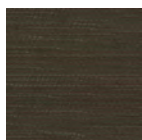
Oray
Metal



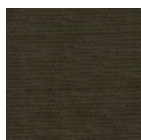
Oray
Griffin



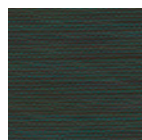
Oray
Dusk



Oray
Chestnut



Oray
Dark



Oray
Indigo



Oray
Ochre

Manga

composition

29% pl, 71% co

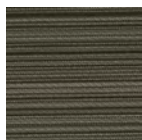
abrasion

40.000 martindale

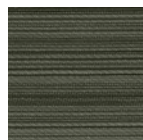
lightfastness 5**firetest**

FR BS5852 0/1

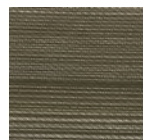
EN1021 I&2



Manga
Grey



Manga
Blue



Manga
Green



Manga
Brown

Faux

composition

100% pl

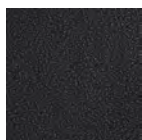
abrasion

50.000 martindale

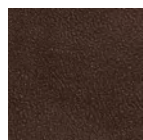
lightfastness 4**firetest**

FR BS5852 0/1

EN1021 I&2



Faux
Black



Faux
Brown

Bouclé

composition

43% co, 28% pan, 14% pa, 12% vi, 3% pl

abrasion

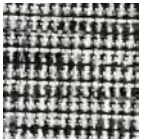
20.000> martindale

lightfastness 4

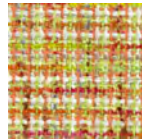
firetest

FR BS5852 0/1

EN1021 I&2



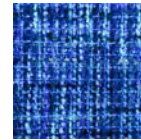
Bouclé
Black white



Bouclé
Rainbow



Bouclé
Brown



Bouclé
Blue

Jacquard andaz

composition:

34% cotton - 30% viscose - 24% linen - 12% polyamide

abrasion:

25000 martindale

firetest:

BS 5852 : Part 1 : 1979

BS EN 1021 I&2



Jacquard
Andaz

Jacquard Old Black & Blue

composition

52% vi, 38% co, 10% li

abrasion

20.000> martindale

firetest

FR BS5852 0/1

EN1021 I&2



Jacquard
Old Blue



Jacquard
Old Black

Jaquard Fresco

composition

40% vi ,36% co,14% pl, 10% li

abrasion

20.000> martindale

firetest

FR BS5852 0/1

EN1021 I&2



Jaquard
Fresco

Twill

composition

72% wo, 8% pa, 20% pl

abrasion

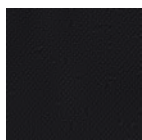
75.000 martindale

lightfastness 5

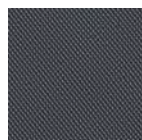
firetest

FR BS5852 0/1

EN1021 I&2



Twill
Caviar



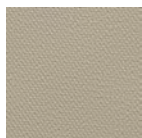
Twill
Graphite



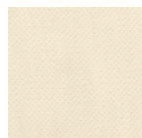
Twill
Grass



Twill
Light grey



Twill
Linen



Twill
Natural



Twill
Passion



Twill
Walnut

Arredo Leather

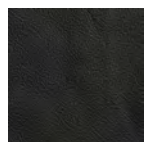
composition

100% semi aniline leather

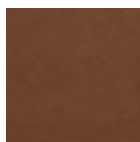
firetest

FR BS5852 0/1

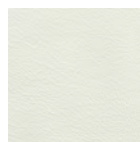
EN1021 I&2



Arredo Leather
Black



Arredo Leather
Brown



Arredo Leather
White

Cervino Leather

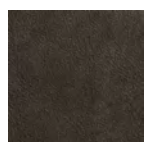
composition

100% aniline leather

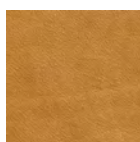
firetest

FR BS5852 0/1

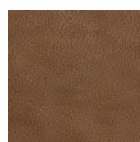
EN1021 I&2



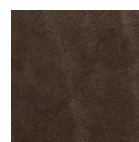
Cervino Leather
Anthracite



Cervino Leather
Cognac



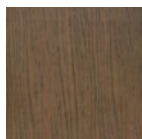
Cervino Leather
Mud



Cervino Leather
Pure

m o o o i[®]

colours



Wood Stained
Cinnamon



Wood Stained
White Washed

cleaning instructions

Moooi recommends using a good furniture polish and a soft cloth. Apply generously in layers to the surface and use the cloth to shine. Do not use abrasive fabrics, gently remove tough stains with warm water and a trusted multi-surface cleaner.

packaging

H 80 cm | 31,5"

W 52 cm | 20,5"

D 56 cm | 22"

Colli 1/1

With packaging:

12 KG | 26,5 lb

m o o o i[®]

dimensions

