

m o o o i<sup>®</sup>



## ZLIQ Sofa

---

ZLIQ Sofa by Marcel Wanders

---

**Designer**

Marcel Wanders

**Year of design**

2012

**Material**

steel, foam and dacron

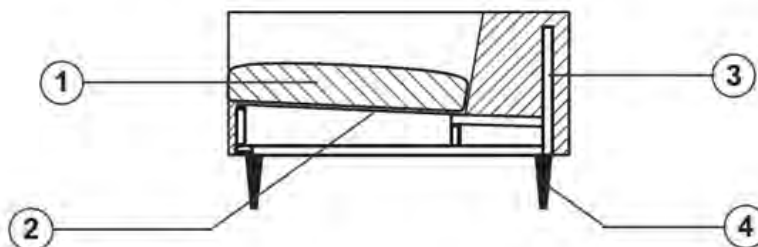
---

---

## technical

The Zliq sofa is constructed from a steel box frame covered in foam and dacron, the seat cushions made in foam and removable.

Zliq sofa is produced with removable covers except for the categories Faux, Arredo leather or Cervino leather. Back pillows are separately available.



1. Multiple density fire retardant foam composition + dacron
2. Elastic straps fixed on the wood base
3. Steel box frame covered
4. Chromed cast aluminium legs

---

## upholstery categories

Macchedil Sottile  
Macchedil Grezzo  
Manga  
Oray  
Faux\*  
Softlinen  
Bouclé

Jacquard Andaz  
Jacquard Fresco  
Jacquard Old Blue  
Velour  
Arredo Leather\*  
Cervino Leather\*

\*not removable

---

## Macchedil, Sottile

### composition

49% vi, 24% pl, 21% li, 6% co

### abrasion

30.000 martindale

### lightfastness 4

### firetest

FR BS5852 0/1

EN1021 I&2



Macchedil Sottile  
**Black indigo**



Macchedil Sottile  
**Pinkish**



Macchedil Sottile  
**Off white**



Macchedil Sottile  
**Light grey**



Macchedil Sottile  
**Light brown**



Macchedil Sottile  
**Grey grey**



Macchedil Sottile  
**Anthracite**



Macchedil Sottile  
**Blue grey**



Macchedil Sottile  
**Cappucino**



Macchedil Sottile  
**Deep blue**

## Macchedil, Grezzo

**composition**

47% co, 20% vi, 18% pi, 8% li, 5% pc, 2% af

**abrasion**

18.000 martindale

**lightfastness 4**

**firetest**

FR BS5852 0/1  
EN1021 I&2



## Manga

**composition**

29% pl, 71% co

**abrasion**

40.000 martindale

**lightfastness 5**

**firetest**

FR BS5852 0/1  
EN1021 I&2



## Oray

### composition

8% co, 38% vi, 15% pl, 39% li

### abrasion

25.000 martindale

### lightfastness 4

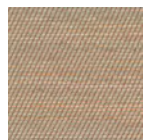
### firetest

FR BS5852 0/1

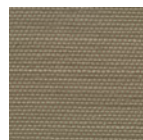
EN1021 I&2



Oray  
**Cream**



Oray  
**Sand**



Oray  
**Rock**



Oray  
**Mineral**



Oray  
**Gravel**



Oray  
**Dark Gull**



Oray  
**Copper**



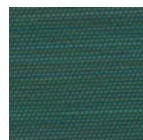
Oray  
**Rust**



Oray  
**Flamboyant**



Oray  
**Oil**



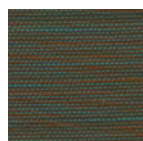
Oray  
**Aqua**



Oray  
**Peyote**



Oray  
**Ocean**



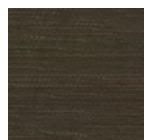
Oray  
**Metal**



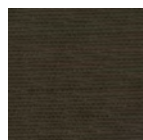
Oray  
**Griffin**



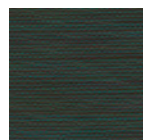
Oray  
**Dusk**



Oray  
**Chestnut**



Oray  
**Dark**



Oray  
**Indigo**



Oray  
**Ochre**

---

## Faux

### composition

100% pl

### abrasion

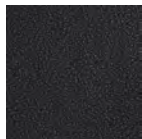
50.000 martindale

### lightfastness 4

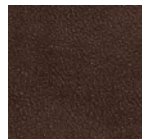
### firetest

FR BS5852 0/1

EN1021 I&2



Faux  
**Black**



Faux  
**Brown**

---

## Softlinen

### composition

100% Linen

### abrasion

25.000 martindale

### lightfastness 6

### firetest

FR BS5852 0/1

EN1021 I&2



Softlinen  
**Beige**



Softlinen  
**Brown**

---

## Bouclé

### composition

43% co, 28% pan, 14% pa, 12% vi, 3% pl

### abrasion

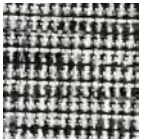
20.000> martindale

### lightfastness 4

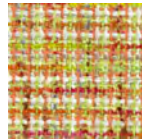
### firetest

FR BS5852 0/1

EN1021 I&2



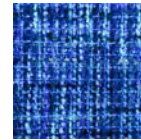
Bouclé  
**Black white**



Bouclé  
**Rainbow**



Bouclé  
**Brown**



Bouclé  
**Blue**

---

## Jacquard andaz

### composition:

34% cotton - 30% viscose - 24% linen - 12% polyamide

### abrasion:

25000 martindale

### firetest:

BS 5852 : Part 1 : 1979

BS EN 1021 I&2



Jacquard  
**Andaz**

---

## Jaquard Fresco

### composition

40% vi ,36% co,14% pl, 10% li

### abrasion

20.000> martindale

### firetest

FR BS5852 0/1

EN1021 I&2



Jaquard  
**Fresco**

---

## Jacquard Old Black & Blue

### composition

52% vi, 38% co, 10% li

### abrasion

20.000> martindale

### firetest

FR BS5852 0/1

EN1021 I&2



Jaquard  
**Old Blue**



Jaquard  
**Old Black**



---

## Velour

### composition

77% wo, 8% pa, 15% pl

### abrasion

100.000 martindale

### lightfastness 7

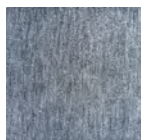
### firetest

FR BS5852 0/1

EN1021 I&2



Velour  
**Coral**



Velour  
**Stone**



Velour  
**Moss**

---

## Arredo Leather

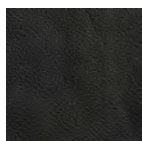
### composition

100% semi aniline leather

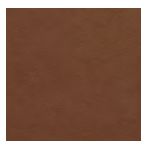
### firetest

FR BS5852 0/1

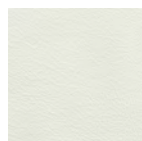
EN1021 I&2



Arredo Leather  
**Black**



Arredo Leather  
**Brown**



Arredo Leather  
**White**

---

## Cervino Leather

### composition

100% aniline leather

### firetest

FR BS5852 0/1

EN1021 I&2



Cervino Leather  
**Anthracite**



Cervino Leather  
**Cognac**



Cervino Leather  
**Mud**



Cervino Leather  
**Pure**

---

## pillows

Pillows is available seperately.

CMHR foam, always upholstered in white or one of in the available fabrics.

---

## packaging

Zliq Sofa:

H 107 cm | 42"  
W 279 cm | 110"  
D 84 cm | 33"

Colli I

With packaging:  
97,5 KG | 215 lb

Zliq 2-seater element:

H 74 cm | 29"  
W 176 cm | 69.3"  
D 64 cm | 25.2"

Colli I

With packaging:  
48 KG | 106 lb

Zliq 1-seater element:

H 74 cm | 29.1"  
W 106 cm | 41.7"  
D 64 cm | 25.2"

Colli I

With packaging:  
34 KG | 75 lb

# m o o o i<sup>®</sup>

## dimensions

